

# Report - 21138087 -

## Report Created by

Name: Pei-Fei Liao

: wang.pingyu

Email: tch19134@tzuchi.com.tw

## Report Information

Report Date: 09-5-2022 15:27:44 CST

Configure Date: 01-4-2022 10:06:13 CST

Deployment Name: Tzuchi I1

Download Date: 09-5-2022 15:27:43 CST

Logger Model: CX405

Logging Interval: 10m

Serial Number: 21138087

Total Data Points: 5505

## Alarm Information

Alarms During Deployment:

Number of High Alarms: 0

High Alarm Limit: -65.00°C

Number of Low Alarms: 0

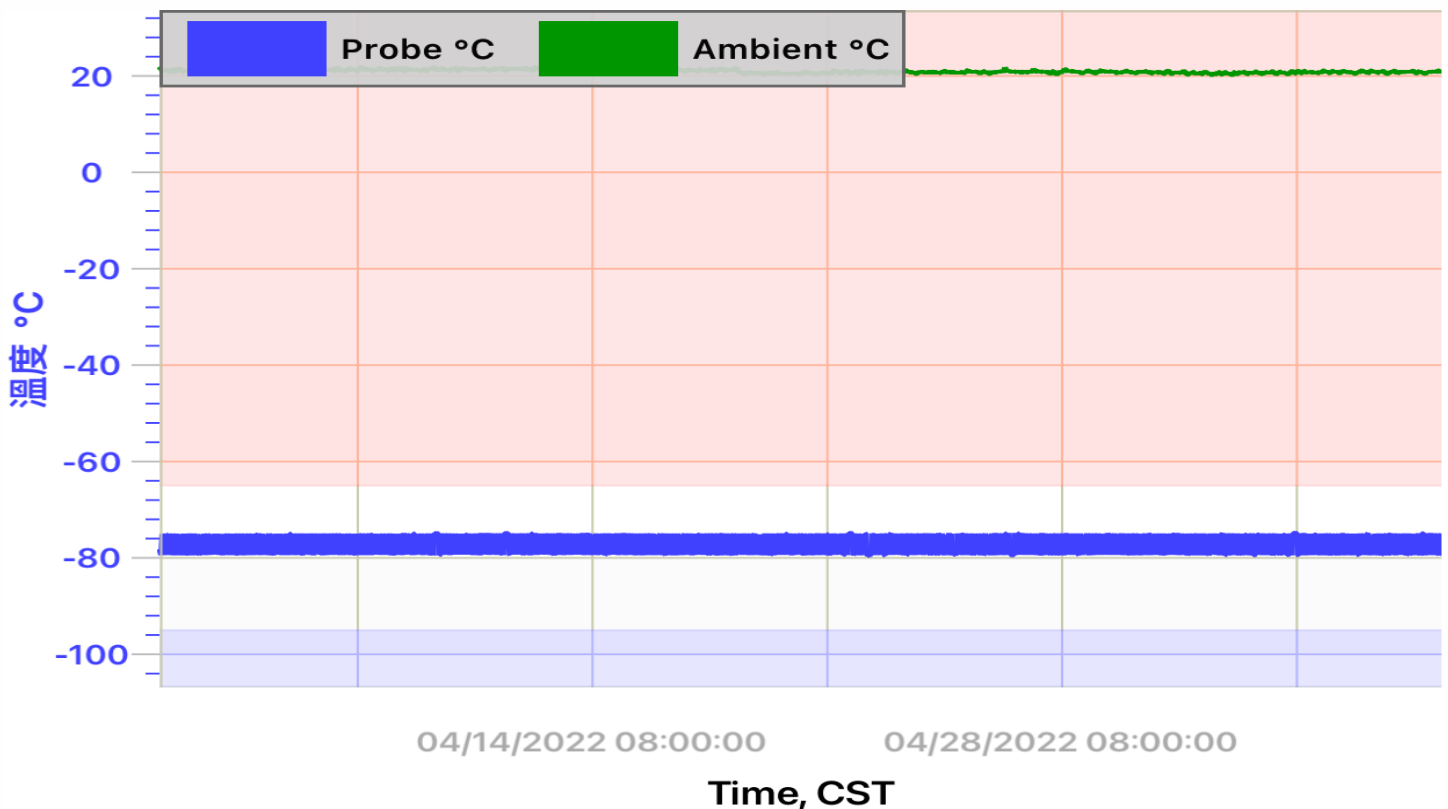
Low Alarm Limit: -95.00°C

Number of Probe Disconnects: 0

Duration:

Elapsed Time Outside Alarm Limits: 0s

Elapsed Time Probe Disconnected: 0s



|   | , °C   | , °C  |
|---|--------|-------|
| / | -77.28 | 21.00 |
|   | 1.45   | .34   |
|   | -79.55 | 20.20 |
|   | -74.84 | 21.99 |
|   | -77.29 | 21.00 |

| CST                |                        |  |        |         |
|--------------------|------------------------|--|--------|---------|
|                    |                        |  |        |         |
| 01-4-2022 10:06:13 | tch19134@tzuchi.com.tw |  | 24.986 | 121.534 |
| 01-4-2022 10:06:38 | tch19134@tzuchi.com.tw |  | 24.986 | 121.534 |
| 09-5-2022 15:27:11 | --                     |  | --     | --      |

| - CST     |        |        |        |
|-----------|--------|--------|--------|
| Date      | , °C   | , °C   | , °C   |
| 01-4-2022 | -79.47 | -74.93 | -77.30 |
| 02-4-2022 | -79.51 | -74.93 | -77.29 |
| 03-4-2022 | -79.47 | -74.93 | -77.30 |
| 04-4-2022 | -79.47 | -74.89 | -77.31 |
| 05-4-2022 | -79.43 | -74.93 | -77.29 |
| 06-4-2022 | -79.47 | -74.89 | -77.28 |
| 07-4-2022 | -79.43 | -74.89 | -77.26 |
| 08-4-2022 | -79.47 | -74.84 | -77.27 |
| 09-4-2022 | -79.51 | -74.89 | -77.28 |
| 10-4-2022 | -79.47 | -74.89 | -77.27 |
| 11-4-2022 | -79.43 | -74.84 | -77.24 |
| 12-4-2022 | -79.47 | -74.84 | -77.27 |
| 13-4-2022 | -79.51 | -74.84 | -77.26 |
| 14-4-2022 | -79.43 | -74.84 | -77.25 |
| 15-4-2022 | -79.47 | -74.84 | -77.28 |
| 16-4-2022 | -79.47 | -74.89 | -77.29 |
| 17-4-2022 | -79.51 | -74.89 | -77.29 |
| 18-4-2022 | -79.47 | -74.89 | -77.29 |
| 19-4-2022 | -79.47 | -74.89 | -77.28 |
| 20-4-2022 | -79.47 | -74.89 | -77.28 |
| 21-4-2022 | -79.55 | -74.84 | -77.28 |
| 22-4-2022 | -79.55 | -74.93 | -77.28 |
| 23-4-2022 | -79.47 | -74.89 | -77.29 |
| 24-4-2022 | -79.51 | -74.84 | -77.28 |
| 25-4-2022 | -79.51 | -74.89 | -77.28 |
| 26-4-2022 | -79.47 | -74.84 | -77.25 |
| 27-4-2022 | -79.51 | -74.84 | -77.28 |
| 28-4-2022 | -79.51 | -74.89 | -77.28 |
| 29-4-2022 | -79.47 | -74.89 | -77.28 |
| 30-4-2022 | -79.47 | -74.89 | -77.29 |
| 01-5-2022 | -79.47 | -74.84 | -77.29 |
| 02-5-2022 | -79.47 | -74.93 | -77.31 |
| 03-5-2022 | -79.51 | -74.89 | -77.31 |
| 04-5-2022 | -79.51 | -74.89 | -77.30 |
| 05-5-2022 | -79.47 | -74.84 | -77.30 |
| 06-5-2022 | -79.51 | -74.89 | -77.29 |
| 07-5-2022 | -79.47 | -74.89 | -77.30 |
| 08-5-2022 | -79.51 | -74.89 | -77.32 |
| 09-5-2022 | -79.55 | -74.84 | -77.29 |