

Report - 21138087 - No Alarm

Report Created by

Name: Pei-Fei Liao

: wang.pingyu

Email: tch19134@tzuchi.com.tw

Report Information

Report Date: 09-2-2022 09:12:57 CST

Configure Date: 03-1-2022 15:45:14 CST

Deployment Name: Tzuchi I1

Download Date: 09-2-2022 09:12:56 CST

Logger Model: CX405

Logging Interval: 10m

Serial Number: 21138087

Total Data Points: 5289

Alarm Information

Alarms During Deployment: **No**

Number of High Alarms: 0

High Alarm Limit: -65.00°C

Number of Low Alarms: 0

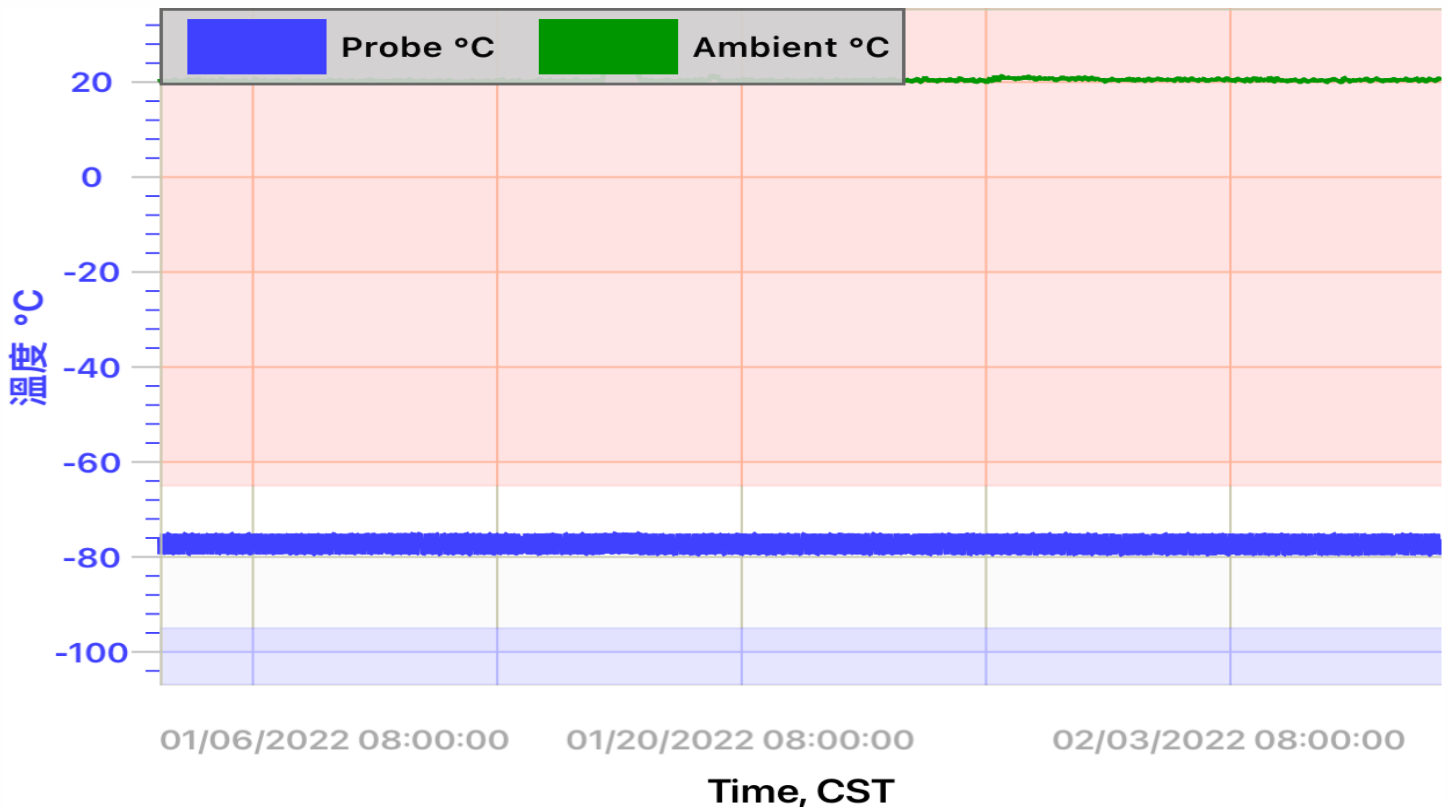
Low Alarm Limit: -95.00°C

Number of Probe Disconnects: 0

Duration: First sample out of limits

Elapsed Time Outside Alarm Limits: 0s

Elapsed Time Probe Disconnected: 0s



Summary Statistics		
Statistics	Probe , °C	Ambient , °C
Average / Mean	-77.40	20.45
Standard Deviation	1.42	.53
Minimum	-79.64	19.67
Maximum	-74.89	23.74
Mean Kinetic Temperature	-77.41	20.45

Audit Report Table CST				
Date Time	Event	User	Latitude	Longitude
03-1-2022 15:45:14	Configured	wang.pingyu@tzuchi.com.tw	24.986	121.534
03-1-2022 15:45:20	Started	wang.pingyu@tzuchi.com.tw	24.986	121.534
09-2-2022 09:12:26		--	--	--

Daily Statistics- CST			
Date	Daily Minimum Temp, °C	Daily Maximum Temp, °C	Daily Average Temp, °C
03-1-2022	-79.43	-75.10	-77.39
04-1-2022	-79.51	-75.10	-77.37
05-1-2022	-79.51	-75.01	-77.37
06-1-2022	-79.47	-75.10	-77.37
07-1-2022	-79.51	-75.10	-77.37
08-1-2022	-79.55	-75.10	-77.37
09-1-2022	-79.47	-75.01	-77.38
10-1-2022	-79.47	-74.97	-77.35
11-1-2022	-79.47	-74.97	-77.36
12-1-2022	-79.51	-75.01	-77.37
13-1-2022	-79.51	-75.10	-77.39
14-1-2022	-79.51	-75.01	-77.37
15-1-2022	-79.51	-75.10	-77.38
16-1-2022	-79.55	-74.93	-77.33
17-1-2022	-79.59	-74.89	-77.35
18-1-2022	-79.59	-75.10	-77.40
19-1-2022	-79.55	-75.01	-77.40
20-1-2022	-79.51	-75.01	-77.40
21-1-2022	-79.55	-75.01	-77.42
22-1-2022	-79.51	-75.10	-77.42
23-1-2022	-79.55	-74.97	-77.39
24-1-2022	-79.55	-75.10	-77.40
25-1-2022	-79.55	-75.01	-77.41
26-1-2022	-79.55	-75.01	-77.40
27-1-2022	-79.55	-75.10	-77.43
28-1-2022	-79.59	-75.01	-77.40
29-1-2022	-79.59	-75.10	-77.41
30-1-2022	-79.64	-75.01	-77.43
31-1-2022	-79.59	-75.01	-77.44
01-2-2022	-79.59	-75.10	-77.42
02-2-2022	-79.64	-75.10	-77.44
03-2-2022	-79.64	-75.01	-77.42
04-2-2022	-79.59	-75.01	-77.45
05-2-2022	-79.64	-75.14	-77.45
06-2-2022	-79.59	-75.01	-77.46
07-2-2022	-79.59	-75.01	-77.46
08-2-2022	-79.59	-75.10	-77.44
09-2-2022	-79.59	-75.10	-77.51